

Service Utilities Setup Instruction for Renishaw DX10

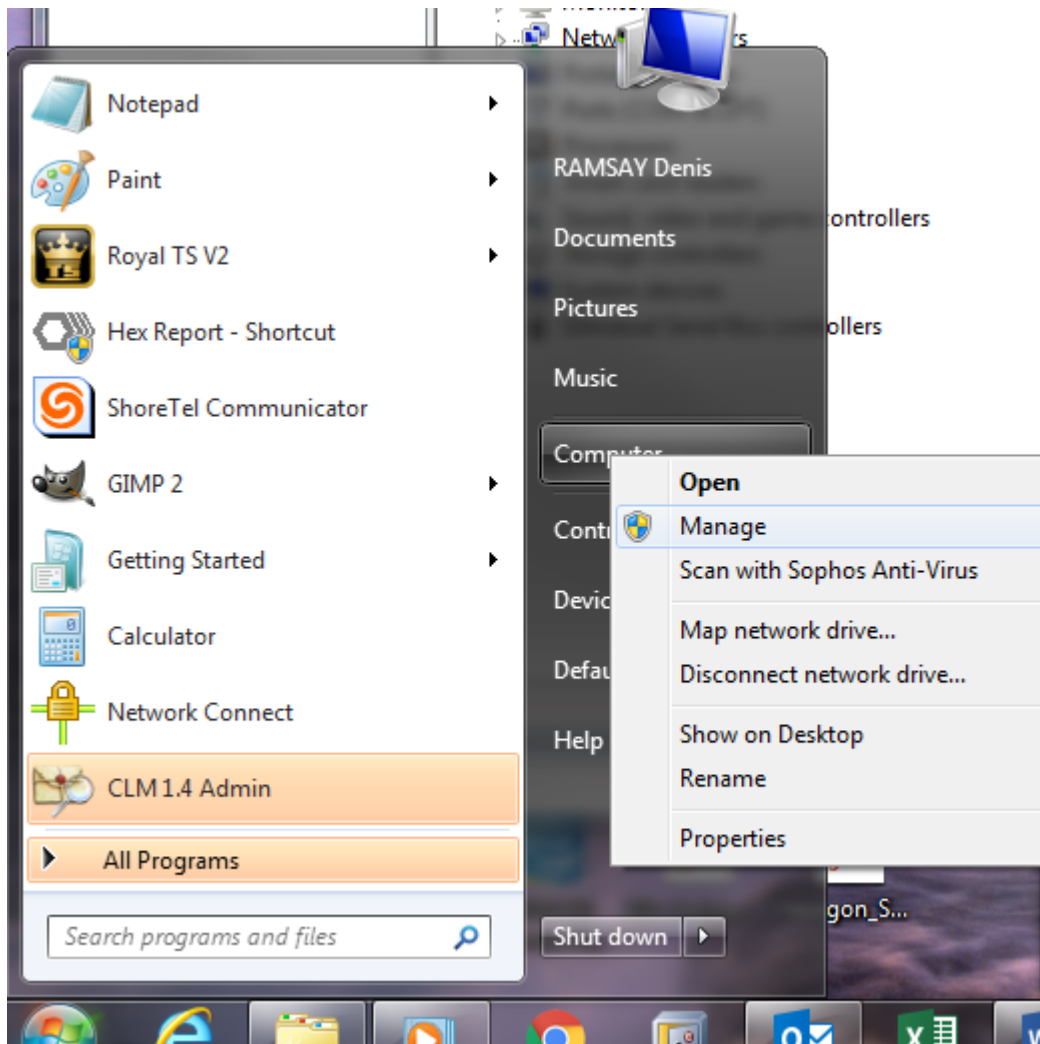
Renishaw DX10 Laser Setup

Prior to installing any drivers for the DX10 we should first remove any existing drivers and or software that may be installed on the PC.

This installation is being performed on Microsoft Windows 7 64-Bit OS. The laser that I'm installing is a Renishaw DX10 module connected to an ML10 and EC10. The same logic should work with newer models of the Renishaw laser family.

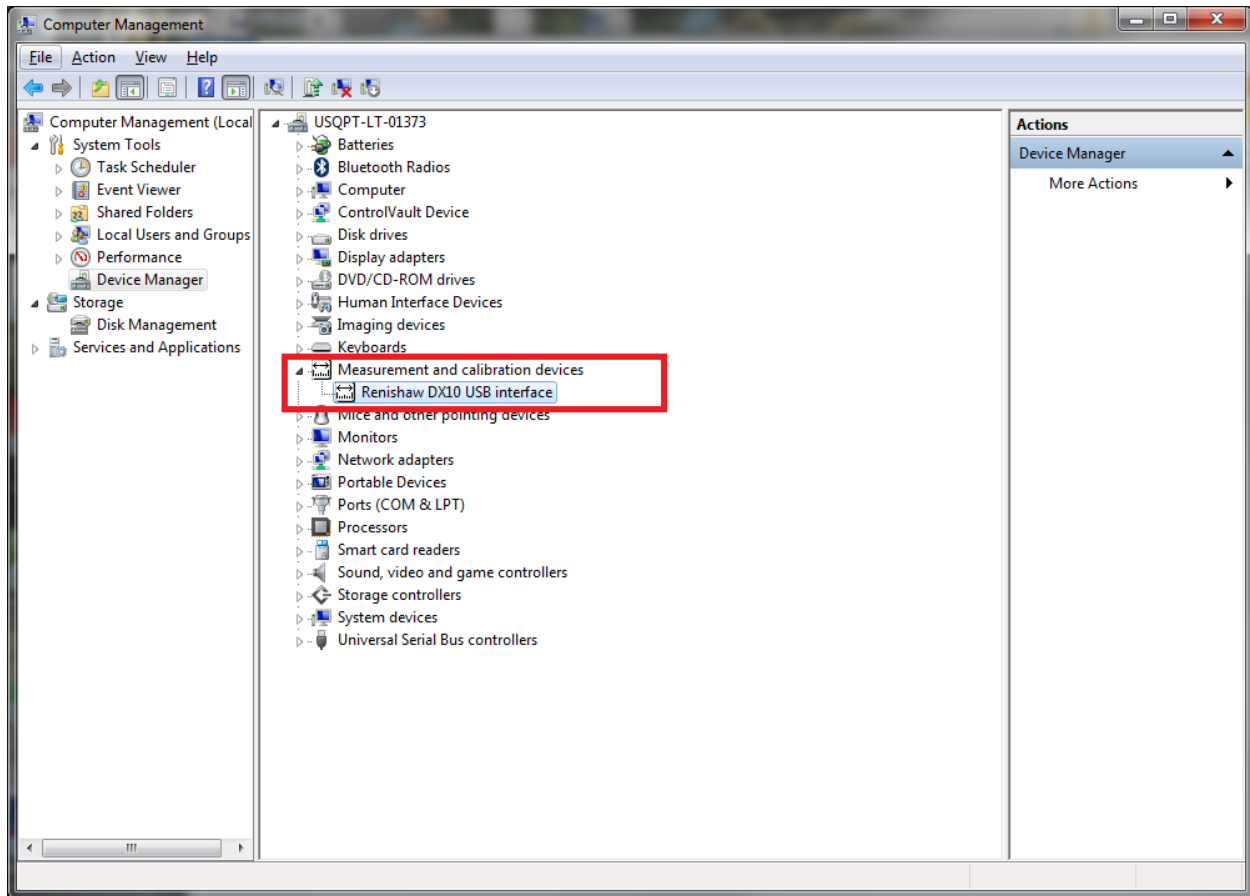
Plug the laser into the DX10 and connect to the computer.

To completely remove any drivers for the DX10, Click on the Start menu then right click on My Computer and select Manage.



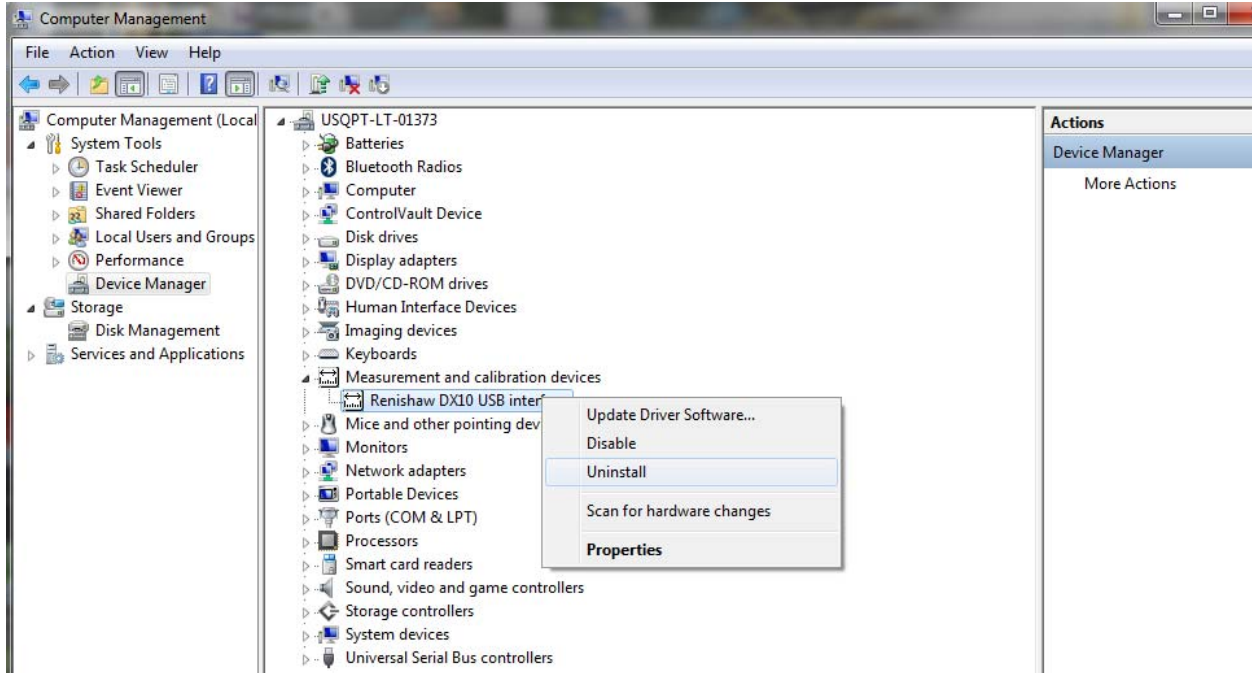
Renishaw DX10 Laser Setup

Click on the Device Manager in the left pane. Look for anything that reads Renishaw. There may not be any drivers installed.

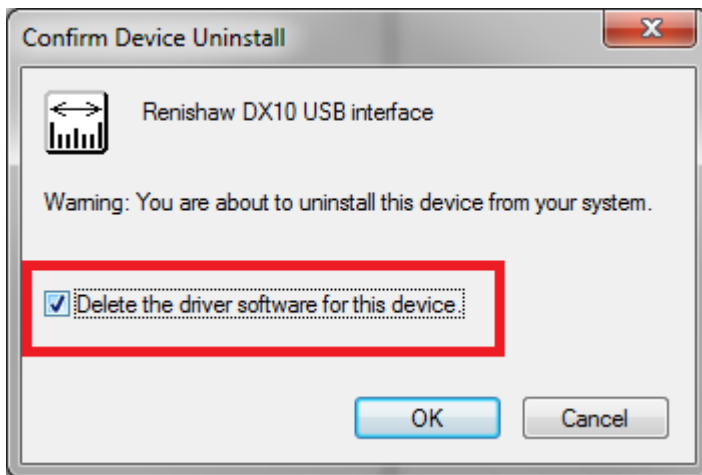


If you find any drivers for the DX10, right click on the driver and select Uninstall.

Renishaw DX10 Laser Setup



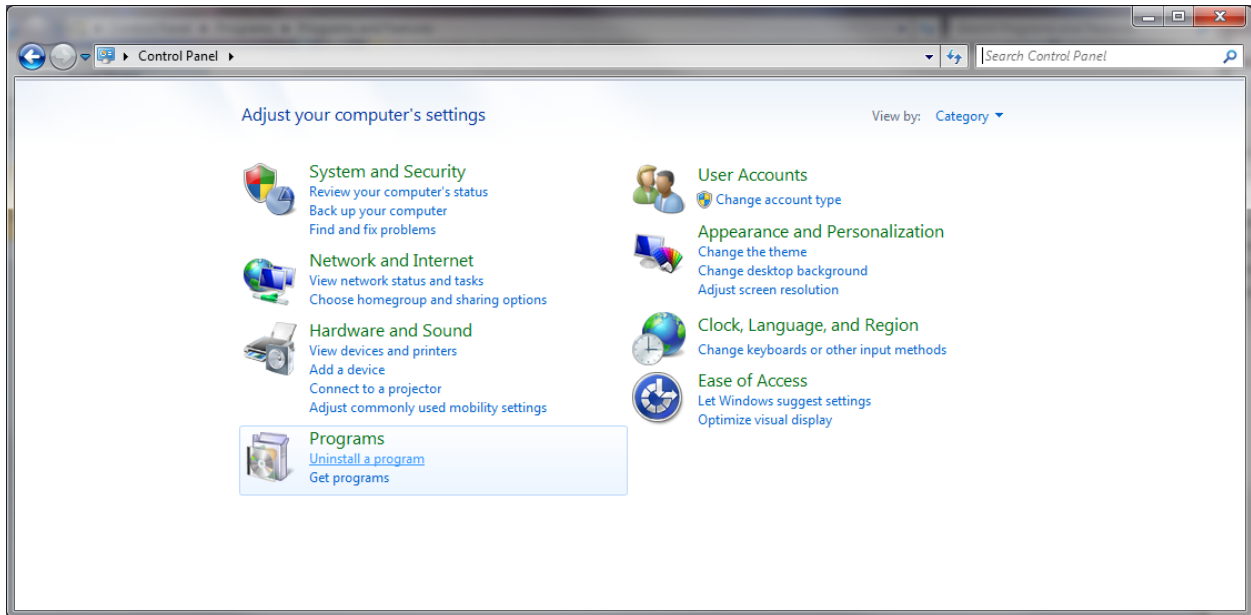
On the Confirm Device Uninstall dialog box be sure to select “Delete the driver software for this device.”



Close the computer management screen.

Renishaw DX10 Laser Setup

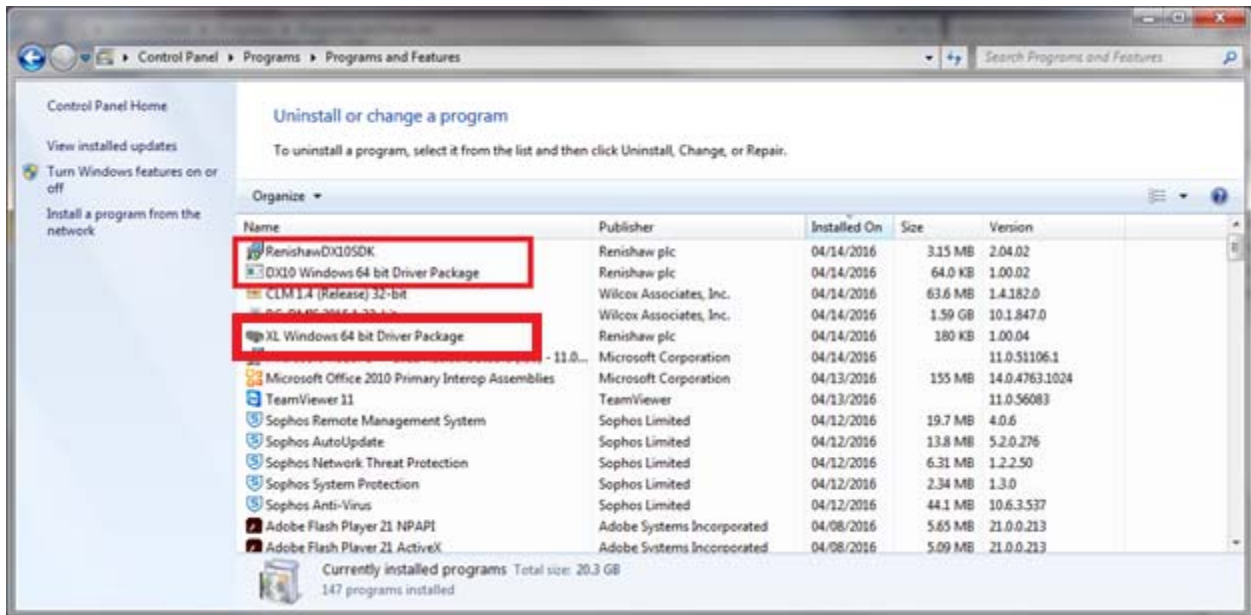
Click on the Start button and select Control Panel



Click Uninstall a program

Look through all the installed programs. We're looking for anything that contains Renishaw or DX10

Uninstall all Renishaw software and drivers.



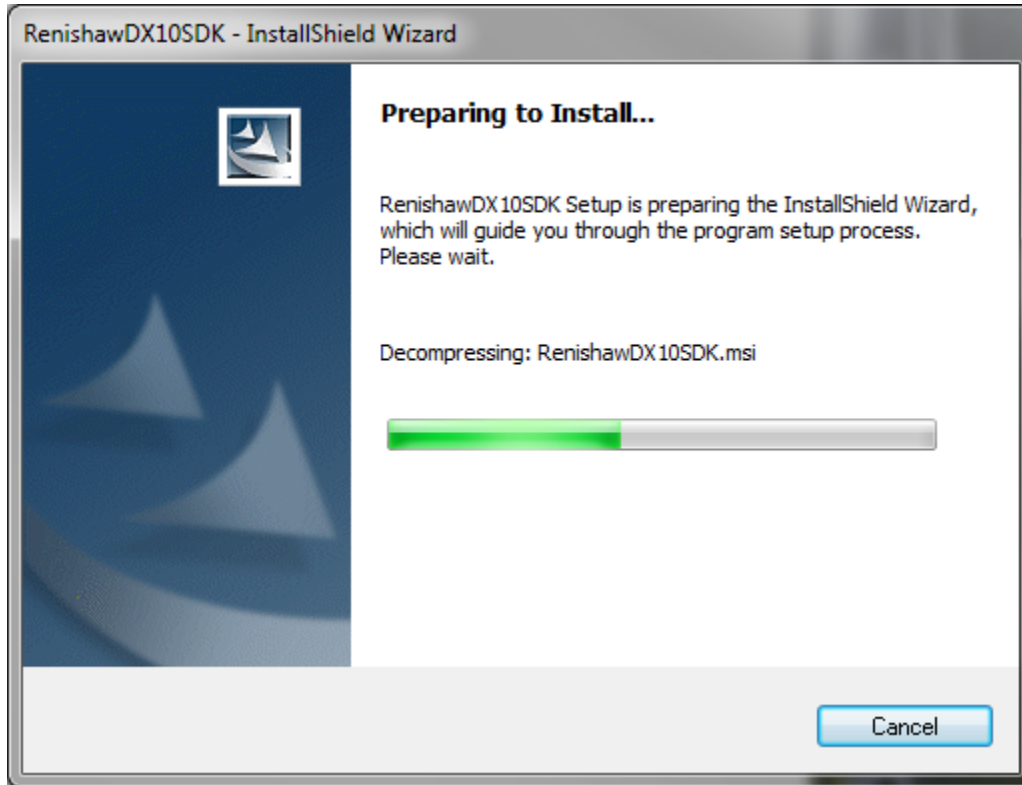
Exit the control panel window.

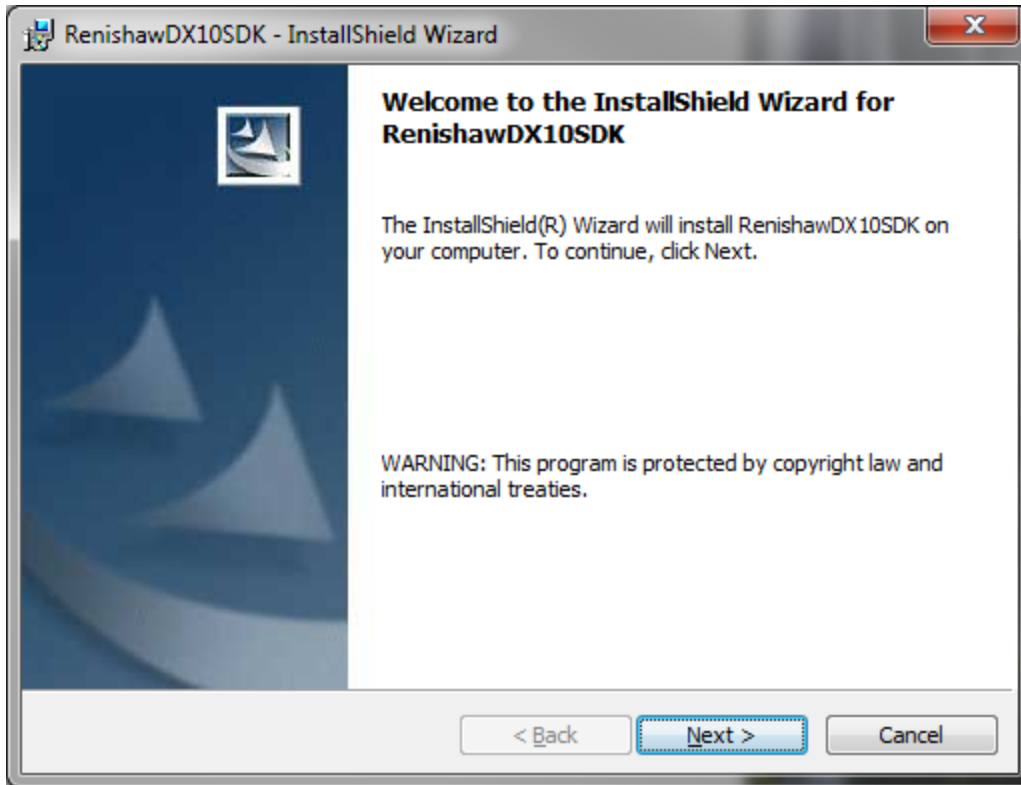
Renishaw DX10 Laser Setup

Download the Renishaw Laser SDK from the following site:

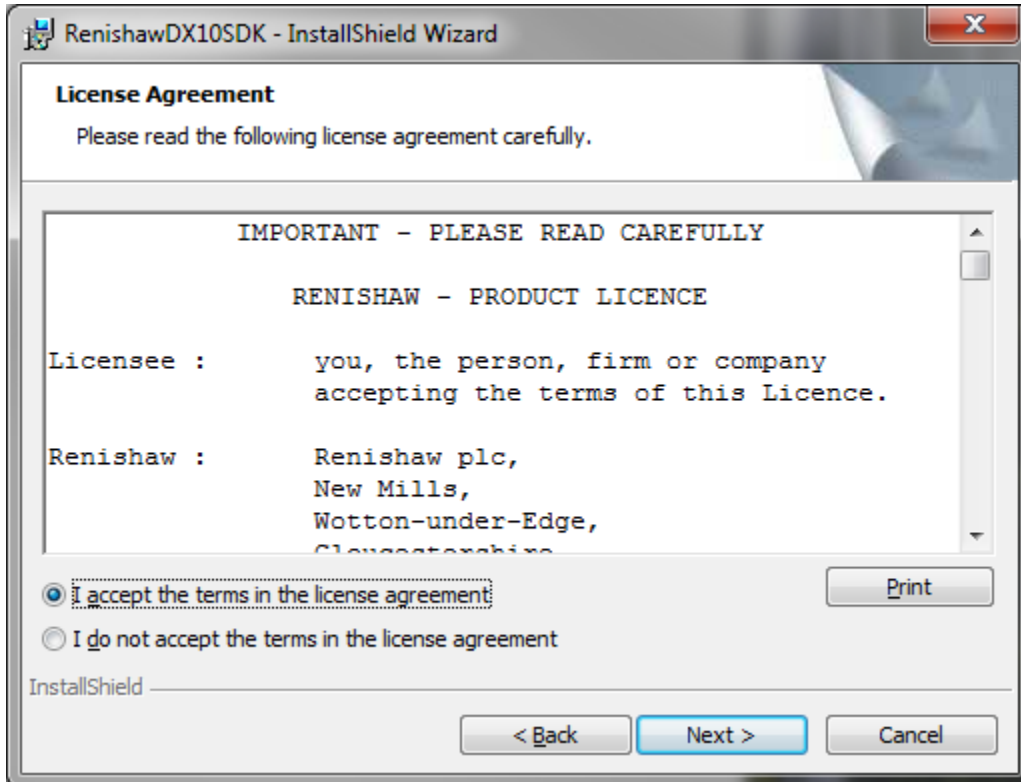
<http://iKeyCode.HexagonMetrology.com/Zip%20Files/RenishawDX10SDK2.05.zip>

Extract the Zip file into a directory on your hard drive. Right click on the Setup.exe and select "Run As Administrator"



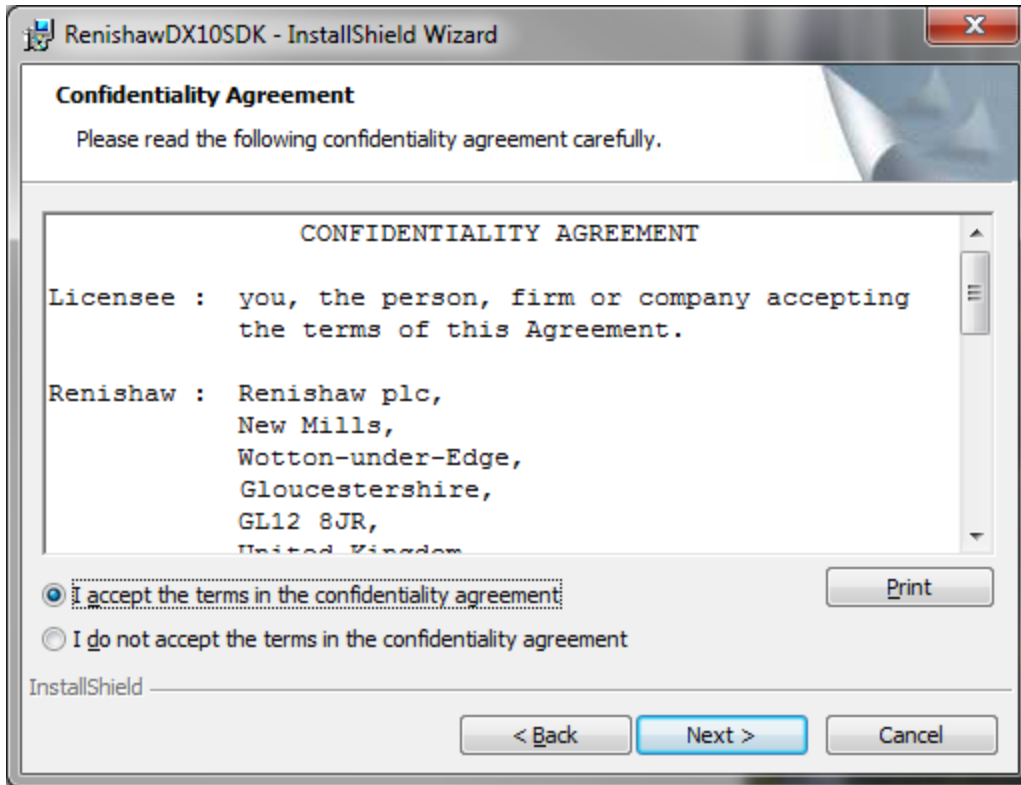


Click Next

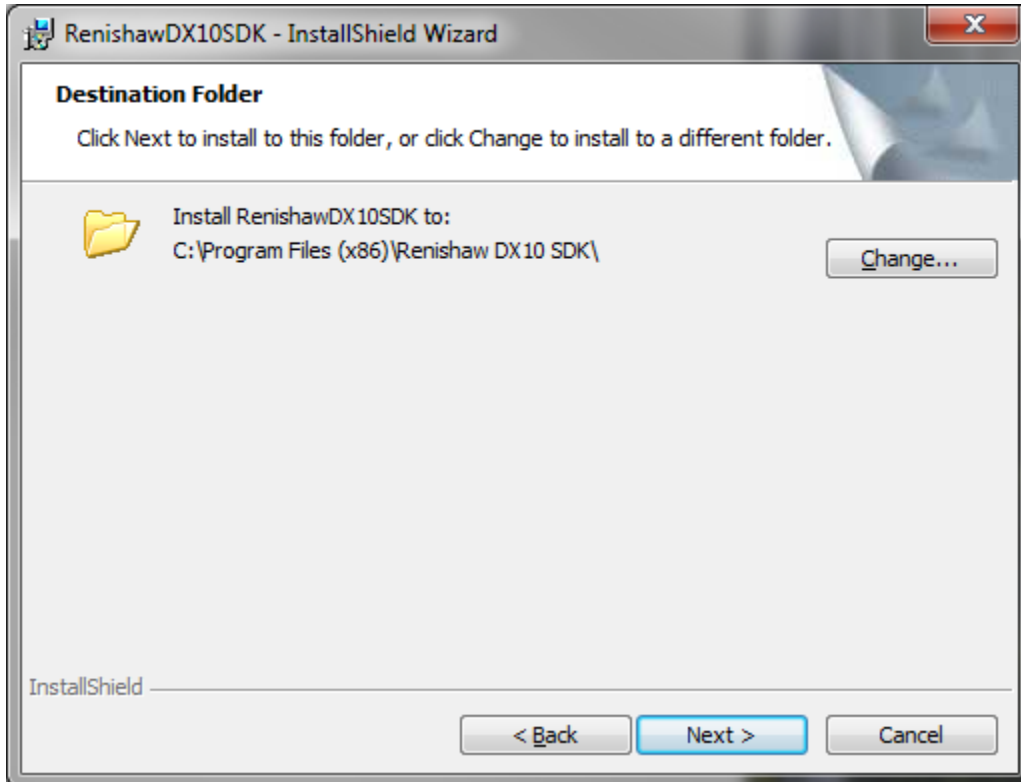


Accept the License agreement and select Next.

Renishaw DX10 Laser Setup

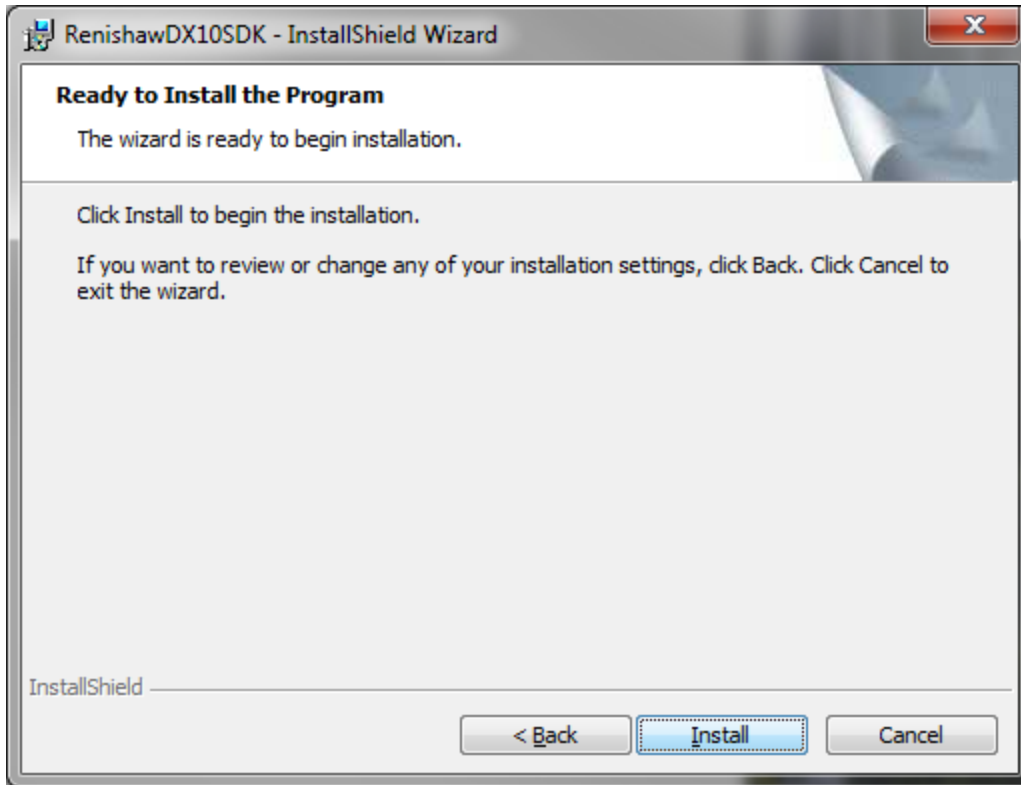


Again, click accept and click Next

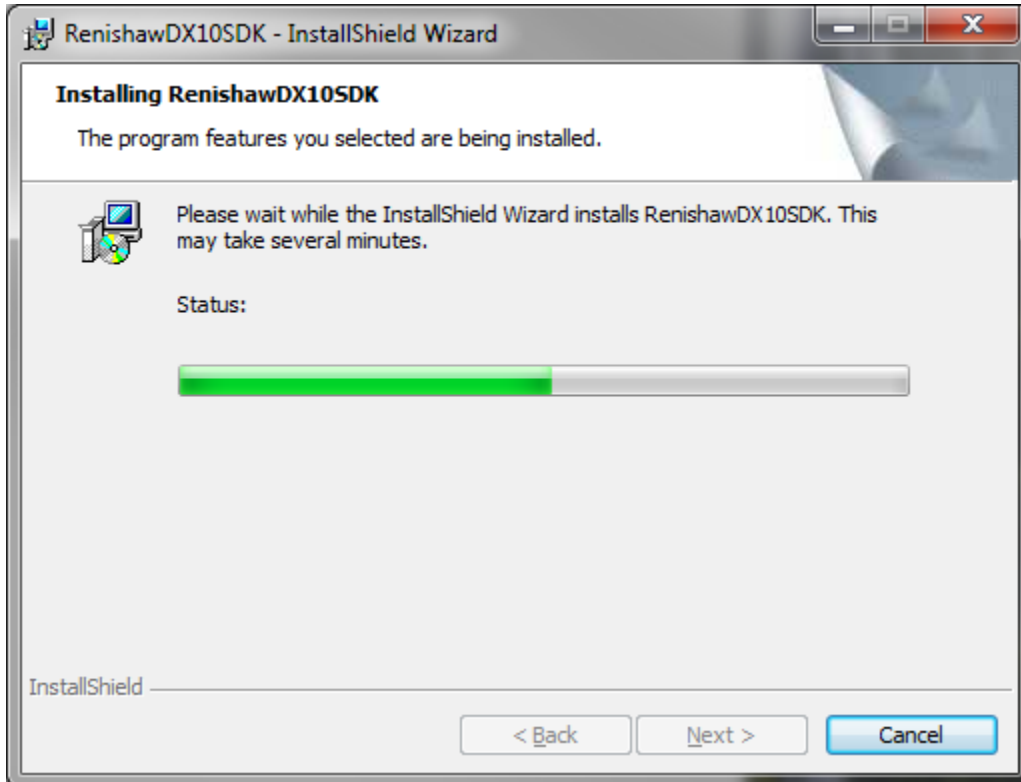


Accept the default installation directory. Click Next

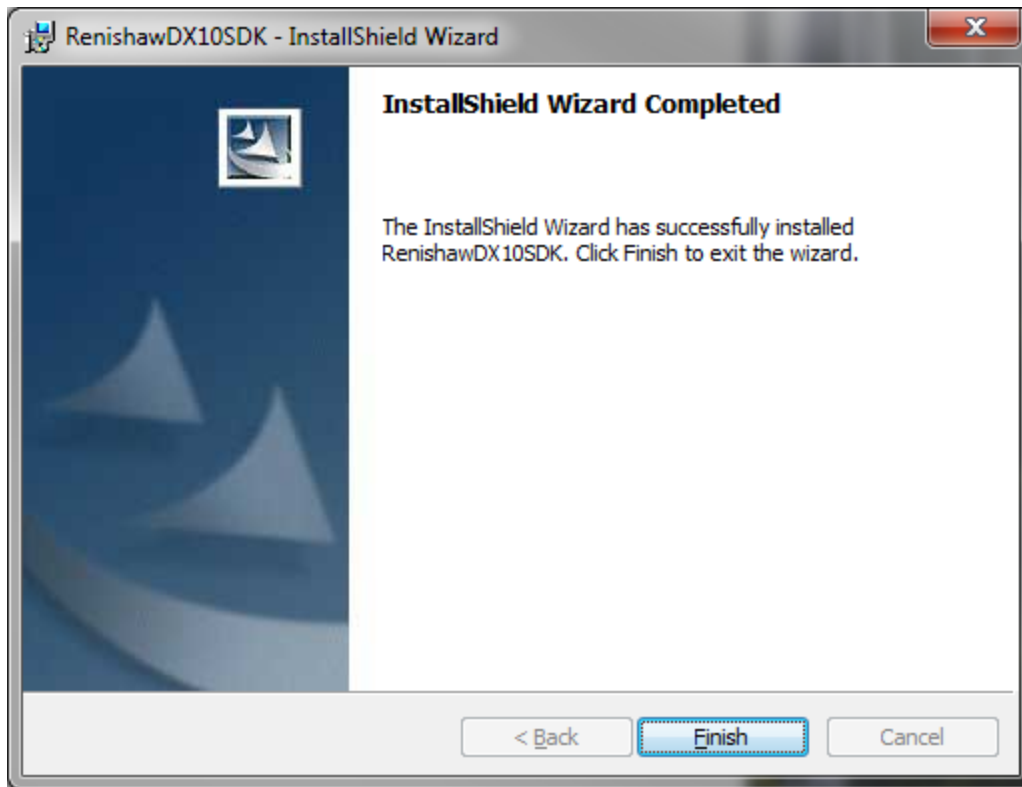
Renishaw DX10 Laser Setup



Click install to begin.



Renishaw DX10 Laser Setup



Click Finish

Unplug the Laser from the USB Port. Then plug it back in. The driver should automatically install.